

S80 Series



S80ADR



S80ALR

PRODUCT SPECIFICATION

S80ADR | S80ALR

Materials Lens-AS, Housing-ABS,
Reflector-Heat resistant ABS

Ambient operating temperature -20°C to +50°C

Volume Max.90dB at 1m

Protection rating IP44

Revolving speed 120-140RPM

Compliant with RoHS directive

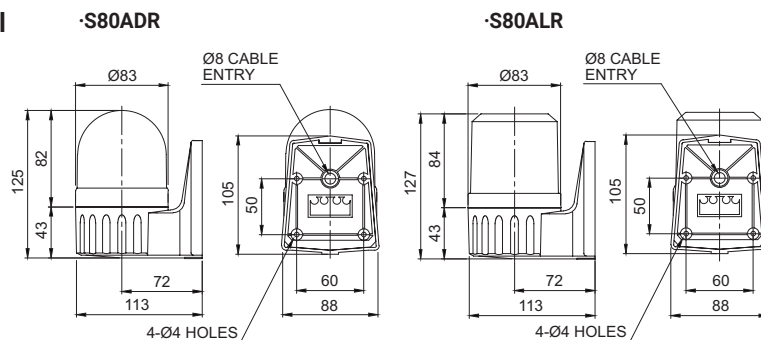
- Equipped wall mount allows for easy assembly. Additional mounting brackets not required
- Terminal block designed inside the side mount bracket enables easy wiring
- Can select between standard and built-in buzzer type depending on installation environment

S80ADR / S80ALR LED Revolving Warning Lights

Model number	Voltage	Current	Certificates	Weight	Color
S80ADR S80ALR	DC12V	0.183A	-	0.34kg	● R-Red
	DC24V	0.127A		0.34kg	● A-Amber
	AC110V	0.035A		0.49kg	● G-Green
	AC220V	0.025A		0.49kg	● B-Blue

Technical Diagram

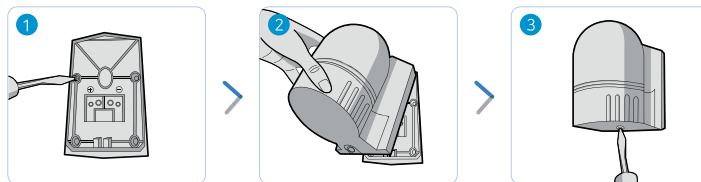
Units: mm



Wiring Instructions

- Attach the Power supply wire to the terminal block
- DC Type: Black output line is negative(-)

Mounting Instructions



- 1 Secure the base plate to the mounting surface, and the Power line to the terminal block
- 2 Mount the warning light by inserting the ring(hook) into the upper part of the base plate
- 3 Screw in the bolt at the base of the mounting bracket to complete assembly

Ordering Specification

S80ALR	-	BZ	-	110	-	R
[Model number]		[Buzzer option]		[Voltage]		[Color]
S80ADR S80ALR		(None) - No buzzer BZ - Built-in buzzer		12-DC12V 24-DC24V 110-AC110V 220-AC220V		● R-Red ● A-Amber ● G-Green ● B-Blue