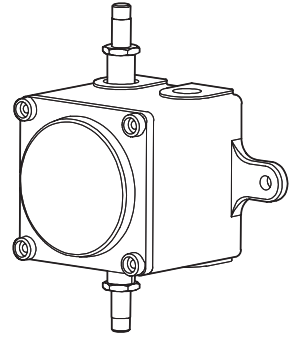
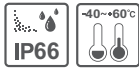


Explosion Proof Solenoid Valve Box

QEB



Thank you for purchasing Qlight's products. Please read this user manual carefully prior to installation and operation to ensure safe and correct use.

Safety Precautions for Explosion Proof Products

Please follow the instruction below to ensure safe and correct use of explosion proof products.

1. Explosion proof products should be managed according to explosion-proof regulations. Do not disassemble, assemble, alter or repair the product arbitrarily.
2. The temperature rating of the product is the temperature the product will experience at the applied rated voltage and ambient temperature indicated.
3. Use cable glands that satisfy the product's explosion proof grade and temperature grade.
4. Unused cable entries must be filled with material that meets the explosion proof grade and temperature rating.
5. Before installing the product, please make sure all cautions indicated on the labels, packaging, and operation manual of the product are fully understood.
6. Installation, maintenance and repair of the product must be performed by experts in the explosion proof field, or persons who have received relevant training.
7. For safety, the product should be installed and operated in environments that avoid high temperature and high pressure.
8. Please follow general safety precautions and avoid installing the product in locations that may generate excessive heat.
9. When installing the product in places where chemicals are located, please make sure that the environment does not have two or more incompatible chemicals mixed. For safety, please read the instruction manual carefully and be mindful of the chemical compositions where the product is used.

Precaution for Safety

Failure to follow the instructions below may cause a loss of life or serious physical injury.

1. During wiring or maintenance, please completely turn off the power of the product. (Failure to follow this may lead to an electric shock.)
2. Do not install the product in locations that subjects it to excessive dust or water other than the conditions designated by the IP protection ratings indicated for each product. (Failure to follow these instructions may cause a fire to the product, electric shock, physical injury, malfunction or damage to the product.)
3. Do not alter or repair this product. If maintenance or repair service is required, please contact your local Qlight contact point. (Failure to follow these instructions may lead to fire, electric shock, or product damage.)
4. Please apply the correct voltage to the product. (Failure to follow these instructions may lead to fire, electric shock, or product damage.)
5. When the product is applied to a condition that may impact lives or property, please make sure to have a double safety device. (Failure to follow this may cause damage to property, fire, electric shock and loss of life.)

Precautions for Correct Use

Failure to follow the proper instructions may cause damage to property, the product, or malfunction of the product that would void the warranty.

1. Please remove any objects that can interrupt ventilation around the product.
2. Please turn off the power of the product immediately if it fails to operate properly.
3. Carefully wire the product according to each product's specification.
4. Please be careful in preventing chemicals such as thinner, benzene, etc. in contact with the surface of the product.
5. Do not apply excessive force/impact to the product.
6. Failure to follow any of the instructions above may cause malfunction or damage to the product, fire, and electric shock.



Please scan the QR code for more detailed product information.

www.qlight.com

Ordering Specifications/ Product Specifications

Ordering Specifications

| QEB | 24 |
|----------------|--|
| [Model number] | [Voltage] |
| • QEB | • 24 - DC24V • 110 - AC110V • 220 - AC220V |

Product Specifications

| Model number | Voltage | Current | Weight | Certificate | color |
|--------------|---------|---------|--------|-------------|------------|
| QEB | DC24V | 450mA | 1.19kg | KIMM | 7.5BG-Cian |
| | AC110V | 160mA | 1.07kg | | |
| | AC220V | 75mA | 1.07kg | | |

Explosion Proof Specifications

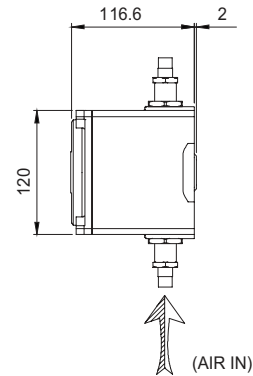
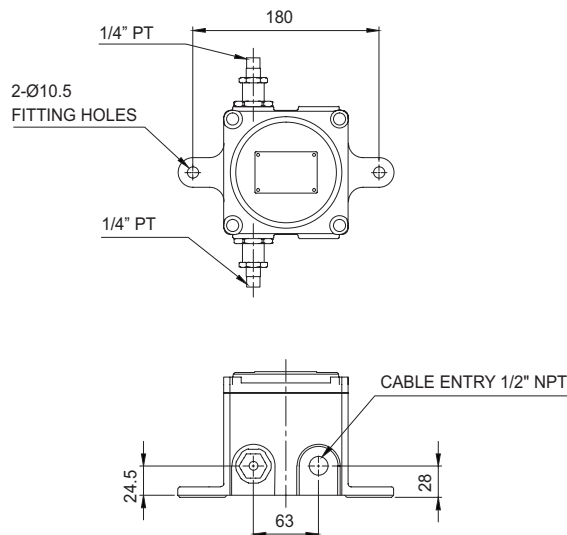
| | |
|-------------------------------|--|
| Model number | QEB |
| Range for operating voltage | DC 24V AC 110V or 220V |
| Ex mark | Ex d IIC T6, IP66 |
| Ambient operating temperature | $-40^{\circ}\text{C} \leq T_{\text{amb}} \leq +60^{\circ}\text{C}$ |
| Explosion proof Zone | Zone1, Zone2 |
| Protection rating | IP66 |

| | | |
|---|------------|---|
| Zone definitions(Gas) | Zone 1 | High risk gas/vapour |
| | Zone 2 | Medium risk gas/vapour |
| Group definitions(Gas) | GROUP II A | Acetone, Petrol, Methanol, Propane, Toluene |
| | GROUP II B | Ethylene, City gas |
| | GROUP II C | Hydrogen, Acetylene, Carbon sulphide |
| Maximum surface temperature of electrical equipment | T1 | 450°C |
| | T2 | 300°C |
| | T3 | 200°C |
| | T4 | 135°C |
| | T5 | 100°C |
| | T6 | 85°C |
| Zone definitions(Dust) | Zone 21 | High risk powder/dust |
| | Zone 22 | Medium risk powder/dust |
| Group definitions(Dust) | GROUP II A | Ignitable fibers/flyings(more than 0.5mm) |
| | GROUP II B | Non-conductive dusts |
| | GROUP II C | Conductive dusts |

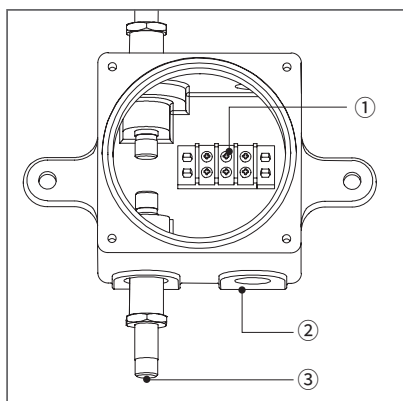
Dimensions

(Units : mm)

QEB



Terminal Box Wiring Instructions

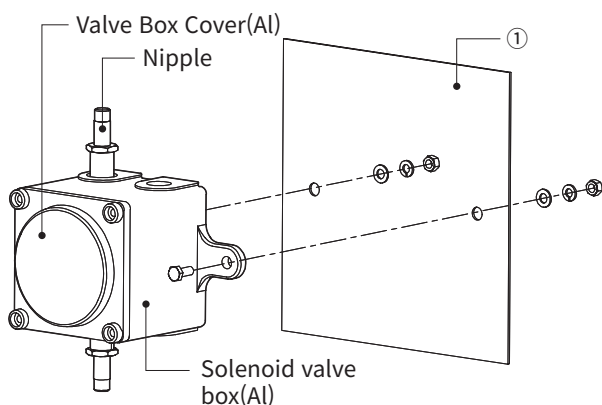


- There's terminal ① inside of Solenoid valve box. Please remove a cover by loosening the solenoid valve box's bolts.
- Please apply fork (U-type) or ring (O-type) locking spade terminal at naked tip of the wire for secure connection.
- Please use ex-proof connector or ex-proof cable gland at cable entry ② in order to keep air tightness. Product can be damaged by water or dust if the cable entry is exposed outdoor without air tightening.
- Entry of air supply ③ is assembled by using air exclusive house. Please prevent the leakage of air with sealing material such as Teflon tape or silicon when assembled. Otherwise it causes malfunction or inoperable status.
- Product can be damaged by water or dust if the air supplying area is exposed outdoor without air tightening.

※ Applicable cable range : AWG16-AWG22

Parts Definition/ Installation/ Mounting Hole Specifications

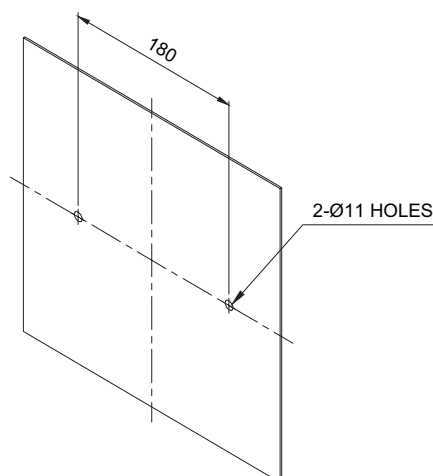
■Parts Definition/Installation



- First, machine taps or holes on the mounting surface①.
- The mounting hole of this product bracket is 10.5mm in diameter(hole)
- When machining taps, fasten the bolt through the mounting hole of the bracket.
- When machining holes, insert the bolt through the hole of the bracket, and tighten the nut from the opposite side of the mounting surface.

■Mounting Hole Specifications

- Machine holes on the mounting surface referring to the diagram below.



Installation Environment and Protection Rating

- This product is designed for use with protection rating of IP66.
- If the product is installed in locations that subject it to excessive dust or water other than the designated IP protection rating indicated(IP66), it may cause malfunction or damage to the product.
- For further information, please visit our website (www.qlight.com).



For your safety

Specification and dimensions listed in this catalogue subject to change without notice for product quality improvement.
The newest product information is available on our website.(www.qlight.com)
Please read the instruction manual attached to the product carefully before installation and use.

Qlight Co., Ltd. www.qlight.com | trade@qlight.com

Head Office | Suite #1510, STX-V Tower, 128 Gasan digital 1-ro, Geumcheon-gu, Seoul, Korea

Tel. +82-2-2679-6152(Toll free. +82-80-328-2222) Fax. +82-2-2679-6154

Factory | 185-25, Mukbang-ro, Sangdong-myeon, Gimhae-si, Gyeongsangnamdo, Korea Tel. +82-55-328-1111(Toll free. +82-80-328-1111)

Qlight Overseas Sales Dept | 704 Nakdong-daero, Sasang-gu, Busan, Korea(Eomgung-Dong) Tel : +82-51-620-4100

Qlight Public Relations & Marketing Team Office | 704 Nakdong-daero, Sasang-gu, Busan, Korea(Eomgung-Dong) Tel. +82-51-245-0017

SHANGHAI Qlight Electronic Co., Ltd. www.qlight.com www.qlightcn.com | qlightcn@qlight.com

China Factory/ Shanghai Sales Office | #Room 333 Building B, #11, Lane 450, Zhenda Road, Baoshan District, Shanghai, China

Tel. +86-21-6651-7100 Fax. +86-21-6315-3929

China Factory Site 2 (Qidong) | #33, Haiyan Road, Qidong High-tech Industrial Development Zone, Qidong, Jiangsu Province, China

Tel +86-513-8384-9999 Fax +86-513-8384-9910

Qlightec

Innovation in Alarm & Signal

Product Operation Inquiry / Customer Support +82-51-620-4100

You can expect prompt service if you have exact information such as model name, symptom, telephone number and address.

※ALL PRODUCT, PRODUCT SPECIFICATIONS AND DATA ARE SUBJECT TO CHANGE WITHOUT NOTICE TO IMPROVE RELIABILITY, FUNCTION OR DESIGN OR OTHERWISE.

Head office : Suite #1510, STX-V Tower, 128 Gasan digital 1-ro, Geumcheon-gu, Seoul, Korea (Postal Code : 08507)

Factory : 185-25, Mukbang-Ro, Sangdong-Myeon, Gimhae-Si, Gyeongsangnam-Do, Korea (Postal Code : 50805)

www.qlight.com

EN - QEB - 2405A