

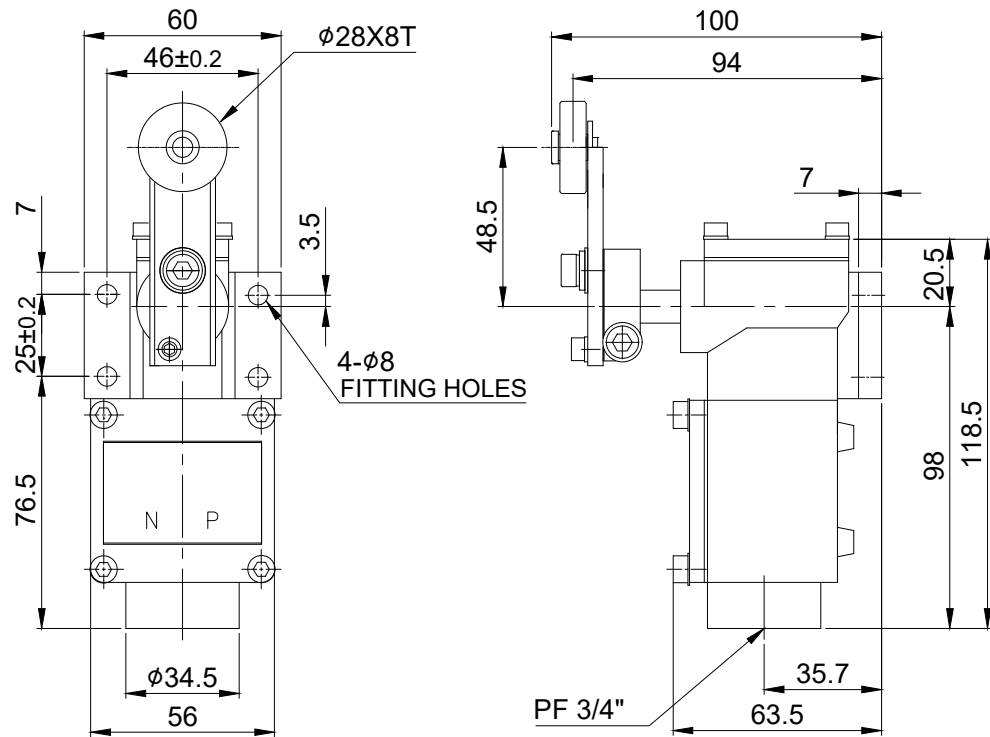
1 2 3 4 5 6

A

B

C

D



MARK	DATE	REVISION	REVISER	APP.BY
1				
2				
3				

MODEL NO	SH6560S-RL
MATERIAL	HEAD & BODY - DIE CAST BRASS BOLT,NUT,ROLLER,LEVER - SUS
CONATCT	2CKT-DB, 1A1B, 250VAC 6A
PROTECTION GRADE	WATER & DUST PROOF - IP56
CABLE ENTRY	PF 3/4"
COLOR	MAKER STANDARD
INSULATION RESISTANCE	100M Ω MIN. at 500V DC

Operating Characteristics

OF max.g	1,680
RF min.g	280
PT	25±5°
MD max.	10°
TT min.	70°

ISO2768-1 : CLASS OF TOLERANCE						SURFACE FINISH		-		TITLE/ NAME		MAT'L		QT'Y		REFERENCE	
FOR LINEAR DIMENSIONS	0.5~3	f	m	Ⓢ	v	SURFACE FINISH	-	Nr.	DWG. NO.	TITLE/ NAME		MAT'L		QT'Y		REFERENCE	
	3~6	±0.05	±0.1	±0.2	-			DSND BY	CHKD BY	CHKD BY	APRV BY	VIEW		DATE			
	6~30	±0.1	±0.2	±0.3	±0.5			J.H.PARK	J.H.PARK		J.K.HAN	3		2020.11.20			
	30~120	±0.15	±0.3	±0.8	±1.5			TITLE		SH6560S-RL		MODEL		SH6560S-RL			
	120~400	±0.2	±0.5	±1.2	±2.5			OUTLINE DRWAING									
	400~1000	±0.3	±0.8	±2	±4												
FOR ANGULAR DIMENSIONS	0~10	±1°		±1°30'	±3°	SURFACE FINISH	-					DWG. NO.		SH6560S-RL-OUT			
	10~50	±0°30'		±1°	±2°												
	50~120	±0°20'		±0°30'	±1°												
	120~400	±0°10'		±0°13'	±0°30'												

