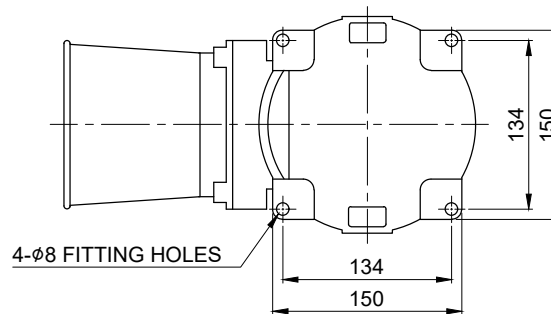




MARK	DATE	REVISION	REVISER	APP. BY
①				
②				
③				

MODEL NO			SESALR			
MATERIAL			HOUSING-AL			
			LENS-TEMPERED CLASS			
			REFLECTOR-HEAT RESISTANT ABS			
COLOR OF LENS.			RED(), AMBER(), GREEN(), BLUE()			
FLASHING PER MIN.			60 ~ 80			
USE VOLT.	LED	CURRENT	DC24V	0.08W	MAX. 1.228A	
			AC120V		MAX. 0.308A	
			AC230V		MAX. 0.154A	
VOLUME			MAX. 118dB			
PROTECTION GRADE			WATER & DUST PROOF IP66			
CABLE ENTRY			1/2" NPT			
COLOR OF HOUSING			MUNSELL NO. 7.5BG 7/2			
ACTION			LED REVOLVING WARNING LIGHT			

※ Voltage AC120V: AC110V-120V, AC230V: AC220V-230V



ISO2768-1 : CLASS OF TOLERANCE					
FOR LINEAR DIMENSIONS	0.5~3	f	m	Ⓢ	v
	3~6	±0.05	±0.1	±0.2	-
	6~30	±0.1	±0.2	±0.3	±0.5
	30~120	±0.15	±0.3	±0.5	±1
	120~400	±0.2	±0.5	±0.8	±1.5
	400~1000	±0.3	±0.8	±1.2	±2.5
FOR ANGULAR DIMENSIONS	0~10	±1°	±1°30'	±2°	±3°
	10~50	±0°30'	±1°	±1°	±2°
	50~120	±0°20'	±0°30'	±1°	±1°
	120~400	±0°10'	±0°13'	±0°30'	±0°30'

SURFACE FINISH	-	-	-	-	1	-
	Nr.	DWG. NO.	TITLE/ NAME	MAT'L	QTY	REFERENCE
	DSND BY	CHKD BY	CHKD BY	APRV BY	VIEW	DATE
	S.H.KIM	J.H.PARK		J.K.HAN	3	2016.08.30
	TITLE			MODEL		
	SESALR OUTLINE DRAWING			SESALR		
				DWG. NO.		
SESALR_OUT						
	SCALE	SIZE	REV	SHEET		
	N/S	A4	00	1/1		

Qlight